

Properties of sustainable green concrete containing waste glass as eco-friendly aggregate: A review

Cite as: AIP Conference Proceedings **2660**, 020121 (2022); <https://doi.org/10.1063/5.0108686>
Published Online: 17 November 2022

Shaker M. A. Gaidi, Youkhana Zayia Dinkha, Mohamed Moafak Arbili, et al.



View Online



Export Citation

ARTICLES YOU MAY BE INTERESTED IN

[Utilization waste granulated blast furnace slag to improve the properties of polluted soil with crude oil](#)

AIP Conference Proceedings **2660**, 020116 (2022); <https://doi.org/10.1063/5.0107724>

[Lithium niobate - Based sensors: A review](#)

AIP Conference Proceedings **2660**, 020124 (2022); <https://doi.org/10.1063/5.0107759>

[Synthesis porous silicon substrates using electrochemical etching method assisted by laser](#)

AIP Conference Proceedings **2660**, 020126 (2022); <https://doi.org/10.1063/5.0107762>



APL Quantum

CALL FOR APPLICANTS

Seeking Editor-in-Chief

Properties of Sustainable Green Concrete Containing Waste Glass as Eco-Friendly Aggregate: A Review

Shaker M. A. Qaidi¹, Youkhana Zayia Dinkha¹, Mohamed Moafak Arbili², James H. Haido^{1,a)}, Bassam A. Tayeh³

¹ *Department of Civil Engineering, College of Engineering, University of Duhok, Duhok, Kurdistan Region-Iraq*

² *Department of Information Technology, Choman Technical Institute, Erbil Polytechnic University, Erbil, Kurdistan Region-Iraq*

³ *Civil Engineering Department, Faculty of Engineering, Islamic University of Gaza, Gaza Strip, Palestine*

^{a)} Corresponding author: james.haido@uod.ac

Abstract. The safe disposal of a large amount of waste glass (WG) in several countries has become a severe environmental issue. In contrast, concrete production consumes a large amount of natural resources and contributes to environmental greenhouse gas emissions. It was widely known that a lot of kinds of waste may be utilized rather than raw materials in the field of construction materials. However, for the wide use of waste in building construction, it is necessary to ensure that the characteristics of the resulting building materials are appropriate. Recycled glass waste is one of the most attractive waste materials that can be used to create sustainable concrete compounds. Therefore, researchers focus on the production of concrete and cement mortar in utilizing waste glass as an aggregate or as supplementary materials. In this article, the literature discussing the use of recycled glass waste in concrete as a partial or complete replacement for aggregates has been reviewed by focusing on the effect of recycled glass waste on the fresh and mechanical properties of concrete.

Keywords: Waste Glass, Recycling, Construction materials, Sustainable concrete, Mechanical properties

INTRODUCTION

Glass is one of the world's most diverse substances because of its great properties, like chemical inertness, optical clarity, low permeability, and high authentic strength [1]. The usage of glass items has greatly increased, leading to enormous quantities of waste glass (WG). Globally, it is estimated that 209 million tons of glass are produced annually [2]. In the U.S, according to Environmental Protection Agency (EPA) [3], 12.27 million tons of glass were created in 2018 in the municipal solid waste (MSW), as shown in Figure 1. Most of which were containers for drinking and food. Furthermore, in 2018, the EU generated 14.5 million tons of glass package wastes [4]. The quantity of generated waste glass will increase by increasing demand for glass components [5-8].

The majority of generated WG is deposited at landfill sites, as indicated in Figure 2. By increasing scarce of land sites in which glass is not biodegradable, landfills have not provided an environmental solution [9, 10]. Recycling and lessening waste are key parts of a waste-management system since they contribute to conserving natural resources, reducing requests for waste landfill space, and reducing pollution of water and air [11]. According to Meyer [12], by 2030, the EU zero-waste initiative estimates that improvements in resource efficiency throughout the chain could decrease material input requirements by 17% to 24%, satisfying the demand for raw materials between 10% to 40%, and could contribute 40% of reducing emissions of greenhouse gases.

However, the utilizing of recycled glass in new glass production minimizes the usage of raw resources and energy-consuming. Nevertheless, due to impurities, mixed colors, or cost, all-glass waste cannot be recycled in the new glass [13]. For example, blended glass cannot be recycled because of chemical inconsistency and changes in

melting temperatures of every piece of glass, since just five grams of non-reusable glass is sufficient to pollute a ton of reusable glass [14].

In fact, innovative options for recycling WG must be developed. One significant option is to use WG for construction materials [14]. Recycling WG not only decreases the demand for landfill sites in the building sector but also significantly helps in decreasing the carbon footprint and save resources [15]. In 1963, Schmidt and Saia [16] performed the first research on the use of waste glass for building materials. The authors recycled the waste glass into useful glass particles for wall panel production. Subsequently, a significant study was conducted in order to use recycled glass for fine or coarse aggregate in mortar and concrete, because of the good hardness of the glass [6, 17, 18]. This study aims at reviewing the possibilities of utilizing WG in concrete as a partial or full replacement for fine or coarse aggregates in order to give practical and brief guidance on recycling and using WG.

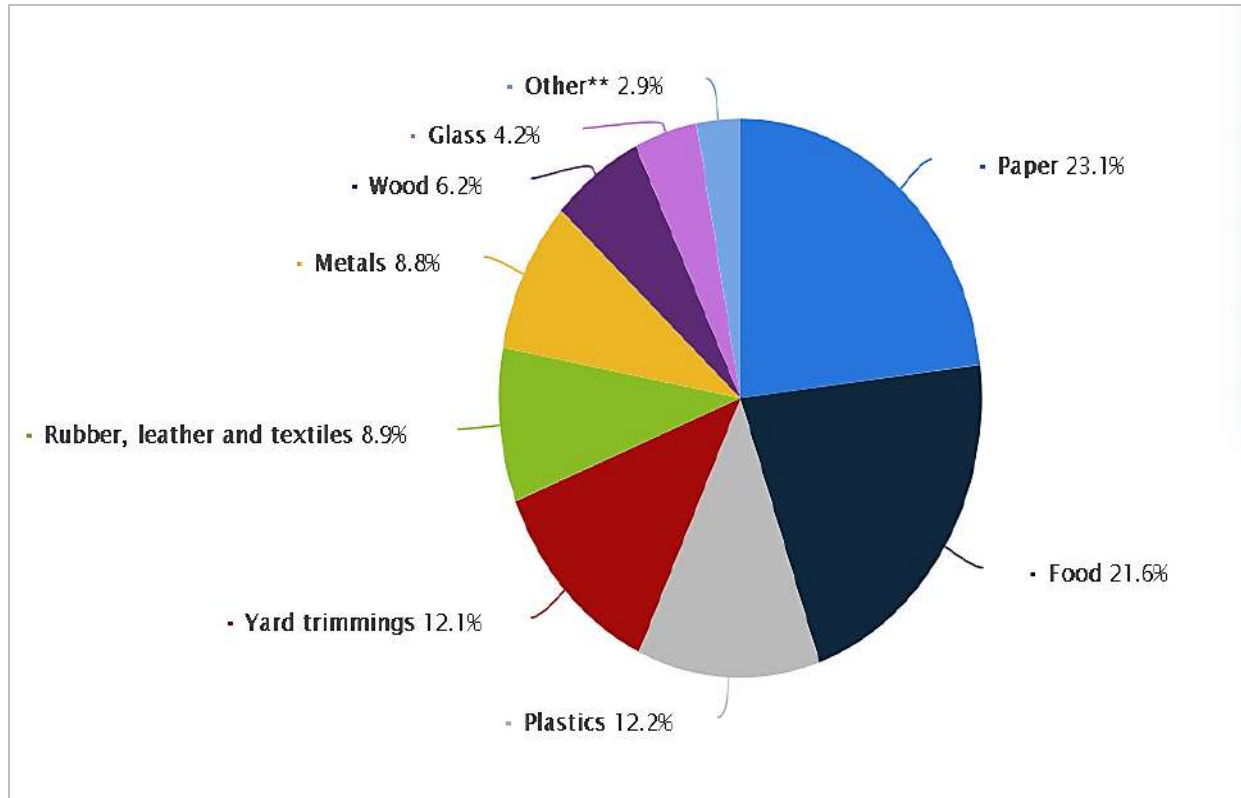


FIGURE 1. Distribution of MSW stream produced in the U.S in 2018. Adapted from [3].



FIGURE 2. WG landfill. Adapted from [19].

PROPERTIES OF GLASS

Chemical properties of glass

Glass exists in various colors and types, with various chemical components. Tables 1 and 2 show the chemical compositions of different colors and types of common typical glass, respectively.

TABLE 1. Chemical components of glass for various colors.

Color	Chemical Compositions											Refs.
	SiO ₂	CaO	Na ₂ O	Al ₂ O ₃	MgO	Fe ₂ O ₃	K ₂ O	SO ₃	TiO ₂	Cr ₂ O ₃	Others	
White	70.39	6.43	16.66	2.41	2.59	0.32	0.23	0.19	0.08	-	0.04 (MnO), 0.02 (Cl)	[20]
Clear	72.42	11.50	13.64	1.44	0.32	0.07	0.35	0.21	0.035	0.002	-	[21]
Flint	70.65	10.70	13.25	1.75	2.45	0.45	0.55	0.45	-	-	-	[22]
Amber	70.01	10.00	15.35	3.20	1.46	-	0.82	0.06	0.11	-	0.04 (MnO)	[20]
Brown	71.19	10.38	13.16	2.38	1.70	0.29	0.70	0.04	0.15	-	-	[23]
Green	72.05	10.26	14.31	2.81	0.90	-	0.52	0.07	0.11	-	0.04 (MnO)	[20]

TABLE 2. Chemical components of glass for various types. Adapted from [24, 25].

Type	Uses	Chemical Compositions									
		SiO ₂	K ₂ O	Na ₂ O	Al ₂ O ₃	MgO	PbO	BaO	CaO	B ₂ O ₃	Others
Barium glasses	Optical dense barium crown	36			4		41			10	9% ZnO
	Colour TV panel	65	9	7	2	2	2	2	2		10% SrO
	Containers	66–75	0.1–3	12–16	0.7–7	0.1–5			6–12		
Soda-Lime Glasses	Light Bulbs	71–73									
	Float Sheet	73–74									
	Tempered Ovenware	0.5–1.5								13.5–15	
Lead glasses	Colour TV funnel	54	9	4	2		23				
	Electronic parts	56	9	4	2		29				
	Neon Tubing	63	6	8	1		22				
	Optical dense flint	32	2	1			65				
Aluminosilicate glasses	Combustion tubes	62		1	17	7			8	5	
	Resistor substrates	57			16	7		6	10	4	
	Fiberglass	64.5		0.5	24.5	10.5					
	Chemical apparatus	81		4	2					13	
Borosilicate	Tungsten sealing	74		4	1					15	
	Pharmaceutical	72	1	7	6					11	

Physical and mechanical properties of glass

The physical and mechanical properties of crushed WG are listed in Tables 3 and 4, respectively.

TABLE 3. Physical properties of crushed WG.

Property	Refs.
Specific gravity	2.4–2.8 2.51 (Green), 2.52 (Brown) [26]
Fineness modulus	4.25 0.44–3.29 [27, 28]
Bulk Density	1360 kg/m ³ [29, 30]
Shape Index (%)	30.5
Flakiness Index	84.3–94.7 [31]

TABLE 4. Mechanical properties of crushed WG.

Property		Refs.
CBR (%)	Approx. 50–75.	[32]
Los Angeles Value (%)	38.4	[29, 31]
	24.8–27.8	[30]
	27.7	[33]
Friction Angle	crit = 38 (Loose RG)	[32]
	crit = 51–61 (Dense RG)	

FRESH CONCRETE PROPERTIES

Workability

There are two parallel points of view on the workability of WG-containing concrete. From a review of past studies on the impact of WG aggregates on the mixes of workability, which are summarized in Table 5. It can be noticed that various research investigations have shown that the mixing of WG increases workability. They connected this beneficial impact of WG on the workability to the weaker cohesive between the cement mortar and the smooth surfaces of waste glass [34, 35].

The smooth surface and low absorption capacity of WG are also important factors in increasing workability [36, 37]. For example, Ali and Al-Tersawy [38] substitute fine aggregate in self-compacting concrete (SCC) mixes with recycled WG at levels of 10%, to 50% by volume. Constant content of water-cement ratio and various superplasticizer doses have been utilized.

They stated that slump flow increased by 2%, 5%, 8%, 11%, and 85%, with the incorporating of 10%, 20%, 30%, 40% and 50% of WG, respectively. In addition, Liu, et al. [39] substitute fine aggregate in ultra-high performance concrete (UHPC) mixes with recycled liquid crystal display (CRT) glass at levels of 25% to 100% by volume.

Constant content of water-cement ratio and various superplasticizer (SP) doses have been utilized. Moreover, they stated that flowability increased by 11, 14, 16, and 12 mm, compared to control (200 mm), incorporating 25%, 50%, 75%, and 100% WG, respectively. Enhancing the workability once including waste glass is a benefit of utilizing this recycled material. It is potential to utilization glass to create HPC in which high workability is necessary. Besides, WG can be used to boost workability rather than employing admixtures like HRWR or superplasticizers [9].

Contrastingly, some studies have stated that including waste glass into the mixes lowered workability. Nevertheless, such decrease has been associated with sharp edges, higher glass particle aspect ratio, and angular form, where obstruction the movement of particles and cement mortar [40-43].

For example, Wang [44] substitutes fine aggregate in liquid crystal display glass concrete (LCDGC) mixes with recycled LCD at levels of 20% to 80% by volume. Various content of w/c ratio (0.38-0.55) and various superplasticizer doses have been utilized. The author stated that slump flow decreased by 4%, 7%, 19%, and 26%, incorporating, 20%, 40%, 60%, and 80% of WG respectively for w/c of 0.44. In addition, Arabi, et al. [45]

Substitute coarse aggregate in SCC mixes with recycled windshield glass at levels of 25% to 10% by volume. Various content of w/c ratio (0.60 -0.69) and various superplasticizer doses have been utilized. They stated that slump flow decreased by 3%, 8%, 9%, and 11% incorporating 20%, 40%, 60%, and 80% of WG, respectively. According to Rashad [9], the optimal content of glass waste to achieve good workability is 20%.

TABLE 5. Summary of the results of past studies on the workability of waste glass concrete.

Refs.	Type of Composite	Source	Type of Sub.	WG Sub. Ratio %	WG Size (mm)	w/c or w/b	Addit. or Admix.	Outcomes
[46]	SCGC	LCD	F.A	10, 20, & 30 (vol.%)	11.8	0.28	SP	Slump flow increased by 11%, 17%, and 21%, respectively.
[47]	HPGC	LCD	F.A	10, 20, & 30 (vol.%)	0.149-4.75	0.25, 0.32, & 0.34	SP	Slump flow increased, ranged between 7-9%.
[48]	Steel slag concrete	WG	C.A	16.5 & 17.5 (vol.%)	4.9-10 & 4.9-16	0.4 & 0.55	WR	Slump increased by 167%, for substitution 16.5% (w/c of 0.55, and size of 4.9-10mm). Slump increased by 8%, for substitution 17.5% (w/c of 0.40, and size of 4.9-16mm). Slump value changed by -7%, +33%, +47%, +31, +36, and +40%, respectively, for w/c of 0.5.
[49]	Cement concrete	WG & PVC	F.A	5, 10, 15, 20, 25, & 30 (wt.%)	0.15-0.6	0.44, 0.5, & 0.55	-	
[50]	Waste glass concrete	WG	F.A	18, 19, 20, 21, 22, 23, & 24 (vol.%)	0.15-0.6	0.4	SP	Workability decreased by increasing the WG ratio
[51]	Waste glass concrete	CRT	F.A	50 & 100 (vol.%)	≤ 5	0.35, 0.45, & 0.55	WR & AE	Slump increased by 55%, and 115%, respectively, for w/c of 0.45.
[52]	Waste glass concrete	WG	C.A	10, 20, & 30 (wt.%)	≤ 20	0.55	-	Slump decreased by 3%, 5%, and 9%, respectively.
[45]	SCC	Windshield	C.A	25, 50, 75, & 100 (vol.%)	9.5 & 12.7 (mixed)	0.6-0.69	Marble filler & SP	Slump flow decreased by 3%, 8%, 9%, and 11%, respectively.
[53]	UHPC	WG	F.A	25, 50, 75, & 100 (wt.%)	≤ 0.6	0.19	Steel fiber & HRWRA	Slump increased by 25%, 111%, 321%, and 532%, respectively.
[39]	UHPC	CRT	F.A	25, 50, 75, & 100 (vol.%)	0.6-1.18	0.19	Steel fiber, SF, & SP	Flowability increased by 11, 14, 16, and 12 mm, respectively, compared to control (200 mm).
[54]	Waste glass concrete	WG	F.A	15 & 30 (vol.%)	≤ 4.75	0.5	-	Slump decreased by 9%, and 39%, respectively.
[55]	Waste-based concrete	WG	F.A	100 (vol.%)	≤ 1.9	0.47	SP & GBFS	Glass sand showed lower workability compared to Lead smelter slag (LSS).
[56]	Waste glass concrete	WG	F.A	5, 15, & 20 (vol.%)	0.15-4.75	0.55	-	Slump decreased by 19%, 29%, and 35%, respectively.
[38]	SCC	WG	F.A	10, 20, 30, 40, & 50 (vol.%)	0.075-5	0.4	SF & SP	Slump flow increased by 2%, 5%, 8%, 11%, and 85%, respectively.
[57]	Cement concrete	WG	F.A	5, 10, 15, & 20 (vol.%)	0.15-9.5	0.56	-	Slump decreased by 1%, 3%, 4%, and 5%, respectively.
[58]	Waste glass concrete	Waste E-glass	F.A	10, 20, 30, 40, & 50 (wt.%)	≤ 4.75	0.68	SF & FA	Slump decreased by 2%, 1%, 50%, 55, and 54%, respectively.

TABLE 5. (Continued)

Refs.	Type of Composite	Source	Type of Sub.	WG Sub. Ratio %	WG Size (mm)	w/c or w/b	Addit. or Admix.	Outcomes
[59]	Waste glass concrete	WG	F.A	10, 15, & 20 (vol.%)	0.15-4.75	0.52	-	Slump decreased by 24%, 23%, and 33%, respectively.
[60]	Waste glass concrete	WG	F.A	15, 20, 30, & 50 (wt.%)	≤ 5	0.52, 0.57, & 0.67	-	Slump decreased by 0%, 0%, 13%, and 13%, respectively, for w/c of 0.57.
[61]	Waste glass concrete	Green waste glass	F.A	30, 50, & 70 (wt.%)	≤ 5	0.5	AE	Workability decreased, ranged between 19-44%.
[40]	Waste glass concrete	Soda-lime glass	F.A	50 & 100 (vol.%)	≤ 5	0.38	MK	Slump decreased by 0%, and 38%, respectively.
[34]	Waste glass concrete	WG	F.A & C.A	10, 25, 50, & 100 (vol.%)	N.M	0.48	-	Slump value changed by -6%, +6%, +18%, and +6%, respectively.
[44]	LCDGC	LCD	F.A	20, 40, 60, & 80 (vol.%)	≤ 4.75	0.38, 0.44, & 0.55	-	Slump flow decreased by 4%, 7%, 19%, and 26%, respectively.
[62]	Cement concrete	LCD	F.A	20, 40, 60, & 80 (vol.%)	≤ 4.75	0.48	-	Slump value changed by 0%, -5%, -5%, and +20%, respectively.
[63]	Alkali-activated mortar	Cullet	F.A	25, 50, 75, & 100 (vol.%)	≤ 2.36	0.6	FA, GBFS, SH, & SS	Flowability increased, ranged between 4-15%.
[64]	Waste glass concrete	WG	F.A	25, 50, 75, & 100 (wt.%)	≤ 5	0.5	-	Slump decreased by 9%, 7%, 15%, and 27%, respectively.

Where:

SCGC is self-compacting glass concrete; SCC is self-compacting concrete; HPGC is high performance recycled liquid crystal glasses concrete; UHPC is ultra-high performance concrete; LCDGC is liquid crystal display glass concrete; LCD is liquid crystal display; CRT is cathode ray tube; WG is waste glass; PVC is Polyvinyl chloride; SP is superplasticizer; HRWRA is a high-range water-reducing agent; WR is water-reducing; AE is air-entraining; SF is silica fume; FA is fly ash; GBFS is granulated blast furnace slag; MK is Metakaolin; SH is sodium hydroxide solution; SS is sodium silicate solution; F.A is fine aggregate; C.A is coarse aggregate; vol. is replacing by volume; wt. is replacing by weight.

Bulk Density

Reviewing past- studies on the impact of WG aggregates on the bulk density, which are summarized in Figure 3, it can be noticed that the majority of studies indicated that incorporating glass waste into mixtures reduces density. This decrease can be ascribed to the lesser density of WG compared to natural aggregate [28, 40, 65, 66], as well as the lower specific gravity [29, 41, 59, 65, 67]. For example, Taha and Nounu [40] substitute fine aggregate in waste glass concrete (WGC) mixes with recycled soda-lime glass at levels of 50% to 100% by volume. They stated that the fresh density of waste glass concrete mixes reduced by 1% and 2% % incorporating 50% and 100% of WG respectively. This density drop might be realized as one of the benefits of using this material in concrete for engineering purposes.

On the other hand, Liu, et al. [39] stated that concrete of 10 to 50% WG had a fresh density greater than reference. The authors substitute fine aggregate (F.A) in UHPC mixes with recycling CRT glass at levels of 25% to 100% by volume. They stated that the fresh density of waste glass concrete mixtures increased by 1% 2.5%, 3.5%, and 6% incorporating 25%, 50%, 75%, and 100% of WG respectively. The authors attributed the reason to the fact that the density of CRT glass (2916 kg/m³) was larger than that of fine aggregate (2574 kg/m³).

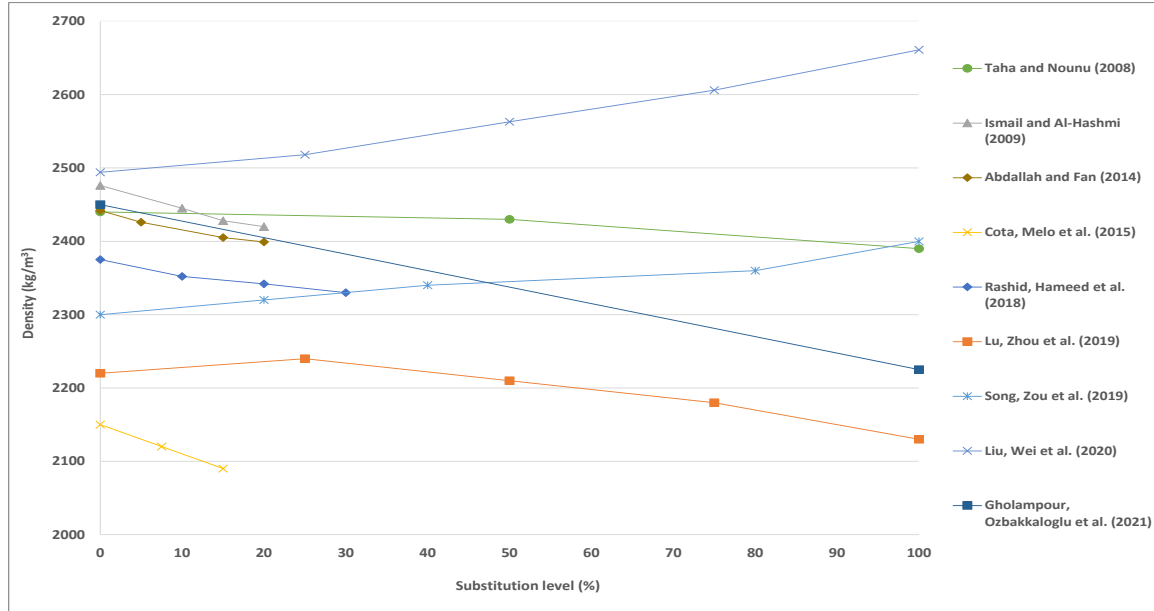


FIGURE 3. Bulk density of concrete with various content of the waste glass. Adapted from References [39, 40, 52, 55, 56, 59, 68-70].

MECHANICAL PROPERTIES

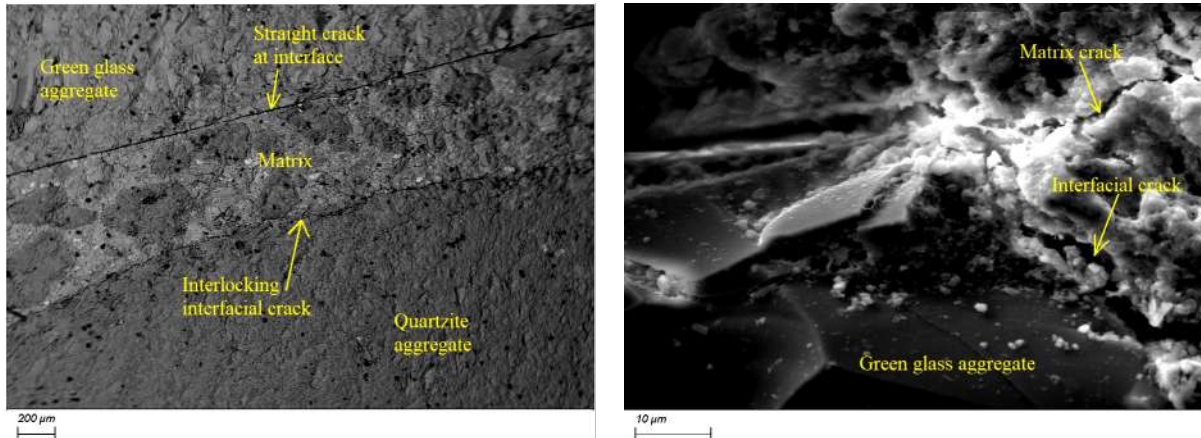
Compressive Strength

By reviewing past- studies on the impact of WG aggregates on the compressive strength of waste glass concrete summarized in Table 6, it can be noticed that the majority of studies indicated that incorporating glass waste into concrete reduces compressive strength. The researchers ascribed this behavior to (i) the sharp edges and smooth particle surfaces, leading to a poorer bond between cement mortar and glass particles at the interfacial transition zone (ITZ) [6, 26, 28, 29, 38, 41, 59, 62, 71, 72]; (ii) increased water content of the glass aggregate mixes due to the weak ability of WG to absorb water [29, 73]; and (iii) the cracks caused by expanding stress formed by the alkali-silica reaction produced from the silica in WG [26]. For example, Park, et al. [61] substitute fine aggregate in waste glass concrete (WGC) with recycled green WG at levels of 30% to 70% by weight. They stated that the compressive strength of concrete decreased by 3%, 13%, and 18% incorporating 30%, 50%, and 70% of WG respectively. In addition, Terro [34] noted that concrete, which contains up to 25% of WG, showed compressive strength values greater than the reference, whereas concrete with a substitution level of more than 25% declined in compressive strength.

In order to better understand the impact of glass waste on the properties of the waste glass concrete. Omoding, et al. [74] investigated the concrete microstructure via SEM by replacing between 12.5% - 100% of the coarse aggregate with green waste glass with a size of 10 -20 mm. The authors stated, as shown in Figure 4 (a & b), (i) that there is a weak connection between the waste glass and the cement matrix. This is due to a reduction in bonding strength between the waste glass and the cement paste due to the high smoothness of waste glass, resulting in cracks, consequently, and to poor adherence between waste glass and cement paste; and (ii) as the content of waste glass increases, the proportion of crack and voids increases in the matrix of the concrete.

However, some studies have stated that waste glass increases mechanical strength. This increase is primarily realized, because of the surface texture and strength of the waste glass particles compared to natural sand [75] and to the pozzolanic reaction of waste glass aggregate [76]. For example, Jiao, et al. [53] substitute fine aggregate in UHPC with recovered WG at levels of 25% to 100% by weight. They stated that the compressive strength of concrete increased by 2%, 17%, 34%, and 20%, with incorporating of 25%, 50%, 75%, and 100% WG, respectively.

Furthermore, regarding the influence of waste glass color on properties, some studies have stated that waste glass color did not show any noticeable variation in strength [61, 77]. On the contrary, Tan and Du [41] claimed that clear waste glass showed less strength.



a) The interface matrix between waste glass and quartzite aggregate.

b) The interface between waste glass and cement paste.

FIGURE 4. SEM micrograph of waste glass concrete. Adapted from [74].

TABLE 6. Summary of the results of past studies on the compressive strength of waste glass concrete.

Refs.	Type of Composite	Source	Type of Subs.	WG Subs. Ratio	WG Size (mm)	w/c or w/b	Addit. or admix.	Com. Str. of control (MPa)	Outcomes
[46]	SCGC	LCD	F.A	10, 20, & 30 (vol.%)	11.8	0.28	SP	65	Decreased by 2%, 5%, and 3%, respectively.
[47]	HPGC	LCD	F.A	10, 20, & 30 (vol.%)	0.149-4.75	0.25, 0.32, & 0.34	SP	56	Decreased by 25%, 32%, and 29%, respectively, for w/c of 0.32.
[78]	Autoclaved aerated concrete	CRT	F.A	5 & 10 (vol.%)	2.16-3.3	N.M	-	29	Decreased by 2%, and 0%, respectively.
[49]	Cement concrete	WG & PVC	F.A	5, 10, 15, 20, 25, & 30 (wt.%)	0.15-0.6	0.44, 0.5, & 0.55	-	34	Decreased by 1%, 4%, 4%, 6%, 7%, and 9%, respectively, for w/c of 0.50.
[50]	Waste glass concrete	WG	F.A	18, 19, 20, 21, 22, 23, & 24 (vol.%)	0.15-0.6	0.4	SP	33	Changed by +6%, +9%, +12%, +9%, +3%, -6% and -9%, respectively.
[51]	Waste glass concrete	CRT	F.A	50 & 100 (vol.%)	≤ 5	0.35, 0.45, & 0.55	WR & AE	28	Decreased by 21%, and 32%, respectively, for w/c of 0.45.
[52]	Waste glass concrete	WG	C.A	10, 20, & 30 (wt.%)	≤ 20	0.55	-	24	Decreased by 13%, 15%, and 23%, respectively.
[68]	Waste glass concrete	WG	F.A	25, 75, & 100 (wt.%)	0.15-5	0.48-0.66	-	38	Changed by +5%, +8%, +3%, and -8%, respectively.
[79]	Waste glass concrete	Cullet	C.A	25, 50, & 75 (wt.%)	2.36-5	0.29	SF	32	Decreased by 6%, 3%, 22%, and 25%, respectively.
[45]	SCC	Windshield	C.A	25, 50, 75, & 100 (vol.%)	9.5 & 12.7	0.6-0.69	Marble filler & SP	33	Decreased by 15%, 24%, 24%, and 30%, respectively.
[80]	HSPC	WG	C.A	25, 50, 75, & 100 (vol.%)	2.36-5	0.14	SF & SP	50	Decreased by 4%, 20%, 30%, and 36%, respectively.
[53]	UHPC	WG	F.A	25, 50, 75, & 100 (wt.%)	≤ 0.6	0.19	Steel fiber & HRWRA	108	Increased by 2%, 17%, 34%, and 20%, respectively.

TABLE 6. (Continued)

Refs.	Type of Composite	Source	Type of Subs.	WG Subs. Ratio	WG Size (mm)	w/c or w/b	Addit. or admix.	Com. Str. of control (MPa)	Outcomes
[39]	UHPC	CRT	F.A	25, 50, 75, & 100 (vol.%)	0.6-1.18	0.19	Steel fiber, SF, & SP	180	Decreased by 7%, 11%, 16%, and 18%, respectively.
[74]	Glass-aggregate concretes	WG	C.A	12.5, 25, 50, & 100 (vol.%)	10-20	0.52	SP	45	Decreased by 4%, 16%, 20%, and 27%, respectively.
[54]	Waste glass concrete	WG	F.A	15 & 30 (vol.%)	≤ 4.75	0.5	-	48	Decreased by 6%, and 0%, respectively.
[56]	Waste glass concrete	WG	F.A	5, 15, & 20 (vol.%)	0.15-4.75	0.55	-	33	Decreased by 6%, 3%, and 0%, respectively.
[38]	SCC	WG	F.A	10, 20, 30, 40, & 50 (vol.%)	0.075-5	0.4	SF & SP	62	Decreased by 5%, 15%, 18%, 23%, and 24%, respectively.
[57]	Cement concrete	WG	F.A	5, 10, 15, & 20 (vol.%)	0.15-9.5	0.56	-	32	Increased by 9%, 44%, 25%, and 38%, respectively.
[59]	Waste glass concrete	WG	F.A	10, 15, & 20 (vol.%)	0.15-4.75	0.52	-	44	Changed by -9%, -9%, and +5%, respectively.
[60]	Waste glass concrete	WG	F.A	15, 20, 30, & 50 (wt.%)	≤ 5	0.52, 0.57, & 0.67	-	48	Decreased by 2%, 4%, 13%, and 19%, respectively, for w/c of 0.57.
[61]	Waste glass concrete	Green waste glass	F.A	30, 50, & 70 (wt.%)	≤ 5	0.5	AE	38	Decreased by 3%, 13%, and 18%, respectively.
[34]	Waste glass concrete	WG	F.A & C.A	10, 25, 50, & 100 (vol.%)	N.M	0.48	-	40	Changed by +38%, +3%, -5%, and -50%, respectively.
[44]	LCDGC	LCD	F.A	20, 40, 60, & 80 (vol.%)	≤ 4.75	0.38, 0.44, & 0.55	-	39	Decreased by 3%, 10%, 13%, and 15%, respectively, for w/c of 0.44.
[62]	Cement concrete	LCD	F.A	20, 40, 60, & 80 (vol.%)	≤ 4.75	0.48	-	36	Decreased by 6%, 11%, 22%, and 25%, respectively.
[70]	Waste glass concrete	CRT	F.A	20, 40, 60, 80, & 100 (vol.%)	4.75	0.45	FA	38	Decreased by 5%, 8%, 8%, 11%, and 13%, respectively.
[81]	Resin concretes	WG	F.A	0 – 100 (wt.%)	≤ 2	N.M	Epoxy resin	95	Decreased by 33%, for substitution of 100%.
[82]	Concrete blocks	WG	F.A	100 (vol.%)	4.75, 2.36, 1.18, & 0.6	0.23	-	34	Decreased by 18%.
[63]	Alkali-activated mortar	Cullet	F.A	25, 50, 75, & 100 (vol.%)	≤ 2.36	0.6	FA, GBFS, SH, & SS	70	Decreased by 3%, 6%, 7%, and 10%, respectively.
[83]	Waste glass concrete	WG	F.A	25, 50., 75, & 100 (wt.%)	≤ 5	0.5	-	20	Changed by +20%, +15%, -10%, and -35%, respectively.

Where:

SCGC is self-compacting glass concrete; SCC is self-compacting concrete; HPGC is high performance recycled liquid crystal glasses concrete; HSPC is high-strength pervious concrete; UHPC is ultra-high performance concrete; LCDGC is liquid crystal display glass concrete; LCD is liquid crystal display; CRT is cathode ray tube; WG is waste glass; PVC is Polyvinyl chloride; SP is superplasticizer; HRWRA is a high-range water-reducing agent; WR is water-reducing; AE is air-entraining; SF is silica fume; FA is fly ash; GBFS is granulated blast furnace slag; MK is Metakaolin; SH is sodium hydroxide solution; SS is sodium silicate solution; F.A is fine aggregate; C.A is coarse aggregate; vol. is replacing by volume; wt. is replacing by weight.

Splitting Tensile Strength

Reviewing past- studies on the impact of WG aggregates on the splitting tensile strength of waste glass concrete, which are summarized in Table 7, it can be noticed that the majority of studies indicated that incorporating glass waste into concrete reduces tensile strength. Similarly, as in compressive strength, studies have attributed the main reason for this behavior to the poor bond between cement paste and glass particles at the interfacial transition zone (ITZ).

For example, Wang [44] substitutes fine aggregate in liquid crystal display glass concrete (LCDGC) with recycled LCD glass at levels of 20% to 80% by volume. The author stated that splitting tensile strength of concrete decreased by 1%, 7%, 8%, and 9%, incorporating, 20%, 40%, 60%, and 80% of WG respectively for w/c of 0.44. Moreover, Ali and Al-Tersawy [38] substitute fine aggregate in self-compacting concrete (SCC) with recycled waste glass at levels of 10% to 50% by volume. They stated that tensile strength of waste glass concrete decreased by 9%, 15%, 16%, 24%, and 28% incorporating 10%, 20%, 30%, 40%, and 50% of WG respectively.

In contrast, Jiao, et al. [53] indicated that concrete of 25% to 100% WG had a tensile strength greater than reference. The authors substitute fine aggregate in ultra-high-performance concrete (UHPC) with recycled WG at levels of 25% to 100% by weight. They stated that the splitting tensile strength of concrete increased by 1%, 3%, 11%, and 7%, incorporating 25%, 50%, 75%, and 100% of WG respectively. The author attributed the reason to the effect of using steel fibers.

TABLE 7. Summary of the results of past studies on the splitting tensile strength of waste glass concrete.

Refs.	Type of Composite	Source	Type of Sub.	WG Sub. Ratio %	WG Size (mm)	w/c or w/b	Addit. or Admix.	Split ten. str. of control (MPa)	Outcomes
[53]	UHPC	WG	F.A	25, 50, 75, & 100 (wt.%)	≤ 0.6	0.19	Steel fiber & HRWRA	11.7	Increased by 1%, 3%, 11%, and 7%, respectively.
[54]	Waste glass concrete	WG	F.A	15 & 30 (vol.%)	≤ 4.75	0.5	-	4.5	Changed by +4%, and -1%, respectively.
[56]	Waste glass concrete	WG	F.A	5, 15, & 20 (vol.%)	0.15-4.75	0.55	-	2.5	Increased by 4%, 12%, and 24%, respectively.
[38]	SCC	WG	F.A	10, 20, 30, 40, & 50 (vol.%)	0.075-5	0.4	SF & SP	6.8	Decreased by 9%, 15%, 16%, 24%, and 28%, respectively.
[57]	Cement concrete	WG	F.A	5, 10, 15, & 20 (vol.%)	0.15-9.5	0.56	-	3.9	Decreased by 0%, 8%, 15%, and 23%, respectively.
[84]	Waste glass concrete	WG	F.A	10, 20, 30, & 40 (wt.%)	≤ 4.75	0.45	-	2.5	Decreased by 2%, 8%, 10%, and 12%, respectively.
[44]	LCDGC	LCD	F.A	20, 40, 60, & 80 (vol.%)	≤ 4.75	0.38, 0.44, & 0.55	-	2.38	Decreased by 1%, 7%, 8%, and 9%, respectively, for w/c of 0.44.
[70]	Waste glass concrete	CRT	F.A	20, 40, 60, 80, & 100 (vol.%)	4.75	0.45	FA	4.48	Decreased by 6%, 6%, 13%, 15%, and 19%, respectively.
[83]	Waste glass concrete	WG	F.A	25, 50., 75, & 100 (wt.%)	≤ 5	0.5	-	3.6	Decreased by 22%, 39%, 39%, and 44%, respectively.

Where:

UHPC is ultra-high performance concrete; LCDGC is liquid crystal display glass concrete; LCD is liquid crystal display; CRT is cathode ray tube; WG is waste glass; SP is superplasticizer; HRWRA is a high-range water-reducing agent; SF is silica fume; FA is fly ash; F.A is fine aggregate; C.A is coarse aggregate; vol. is replacing by volume; wt. is replacing by weight.

Flexural Strength

The flexural strength of waste glass concrete indicates comparable tendencies to its compressive strength and tensile strength. The majority of the research revealed that the introduction of WG aggregates reduced flexural strength. However, other research showed that flexural strength increased when WG was included. For instance, Kim, et al. [51] substitute fine aggregate in waste glass concrete (WGC) with recycled CRT glass at levels of 50% to 100% by volume. They stated that flexural strength of concrete decreased by 9%, and 14% incorporating 50%, and 100% of WG respectively for w/c of 0.45. On the contrary, Jiao, et al. [53] substitute fine aggregate in UHPC with recovered WG at levels of 25% to 100% by weight. They stated that flexural strength of concrete increased by 2%, 1%, 5%, and 1% incorporating 25%, 50%, 75%, and 100% of WG respectively.

Moreover, it can be concluded that the discrepancy between studies may be related to the type, size, and source of waste glass utilized in the mixtures. The mineral composition varies as the type of glass changes. Therefore, changing the mechanisms of interaction with binders in concrete, in turn, affects the properties [85, 86]. Table 8 presents the outcomes of various studies on the flexural strength of waste glass concrete.

TABLE 8. Summary of the results of past studies on the flexural strength of waste glass concrete.

Refs.	Type of Composite	Source	Type of Sub.	WG Sub. Ratio %	WG Size (mm)	w/c or w/b	Addit. or Admix.	Flex. str. of control (MPa)	Outcomes
[46]	SCGC	LCD	F.A	10, 20, & 30 (vol.%)	11.8	0.28	SP	5.1	Changed by +16%, -12%, and -2%, respectively.
[50]	Waste glass concrete	WG	F.A	18, 19, 20, 21, 22, 23, & 24 (vol.%)	0.15-0.6	0.4	SP	4.84	Changed by +5%, +6%, +8%, +7%, +1%, -5% and -6%, respectively.
[51]	Waste glass concrete	CRT	F.A	50 & 100 (vol.%)	≤ 5	0.35, 0.45, & 0.55	WR & AE	4.4	Decreased by 9%, and 14%, respectively, for w/c of 0.45.
[53]	UHPC	WG	F.A	25, 50, 75, & 100 (wt.%)	≤ 0.6	0.19	Steel fiber & HRWRA	21	Increased by 2%, 1%, 5%, and 1%, respectively.
[39]	UHPC	CRT	F.A	25, 50, 75, & 100 (vol.%)	0.6-1.18	0.19	Steel fiber, SF, & SP	39	Decreased by 5%, 8%, 18%, and 21%, respectively.
[56]	Waste glass concrete	WG	F.A	5, 15, & 20 (vol.%)	0.15-4.75	0.55	-	4.7	Increased by 6%, 11%, and 15%, respectively.
[38]	SCC	WG	F.A	10, 20, 30, 40, & 50 (vol.%)	0.075-5	0.4	SF & SP	7.4	Decreased by 3%, 11%, 12%, 23%, and 24%, respectively.
[59]	Waste glass concrete	WG	F.A	10, 15, & 20 (vol.%)	0.15-4.75	0.52	-	5.89	Increased by 4%, 7%, and +11%, respectively.
[60]	Waste glass concrete	WG	F.A	15, 20, 30, & 50 (wt.%)	≤ 5	0.52, 0.57, & 0.67	-	4.5	Decreased by 11%, 22%, 33%, and 44%, respectively, for w/c of 0.57.
[44]	LCDGC	LCD	F.A	20, 40, 60, & 80 (vol.%)	≤ 4.75	0.38, 0.44, & 0.55	-	3.5	Decreased by 6%, 9%, 10%, and 11%, respectively, for w/c of 0.44.
[81]	Resin concretes	WG	F.A	0 – 100 (wt.%)	≤ 2	N.M	Epoxy resin	24.3	Decreased by 1%, for substitution of 100%.

Where:

SCGC is self-compacting glass concrete; SCC is self-compacting concrete; UHPC is ultra-high-performance concrete; LCDGC is liquid crystal display glass concrete; LCD is liquid crystal display; CRT is cathode ray tube; WG is waste glass; SP is superplasticizer; HRWRA is a high-range water-reducing agent; WR is water-reducing; AE is air-entraining; SF is silica fume; F.A is fine aggregate; C.A is coarse aggregate; vol. is replacing by volume; wt. is replacing by weight.

Modulus of Elasticity (MOE)

The modulus of elasticity of concrete (MOE) depends on the normal and lightweight aggregates elasticity modulus, cement matrix, and their relative ratios in the mixes [25]. In general, The incorporation of WG aggregates into concrete increases the modulus of elasticity [44, 56]. For instance, Steyn, et al. [54] substitute fine aggregate in WGC with recovered WG at levels of 15% to 30% by volume. They stated that MOE of concrete increased by 1%, and 7% incorporating 15%, and 30% of WG respectively. In addition, Omoding, et al. [74] substitute coarse aggregate in glass-aggregate concretes with recycled WG at levels of 12.5% to 100% by volume. They stated that MOE of concrete increased by 2% to 4% for a replacement rate of 12.5% to 50%, then decreased by 3% to 9% for replacement ratios above 50%.

However, some studies have stated that including waste glass decreases the MOE of concrete. For instance, Ali and Al-Tersawy [38] substitute fine aggregate in SCC with recovered WG at levels of 10% to 50% by volume. They stated that MOE of concrete decreases by 2%, 8%, 9%, 12%, and 13% incorporating 10%, 20%, 30%, 40% and 50% of WG respectively. Figure 5 presents the outcomes of various studies on the MOE of waste glass concrete.

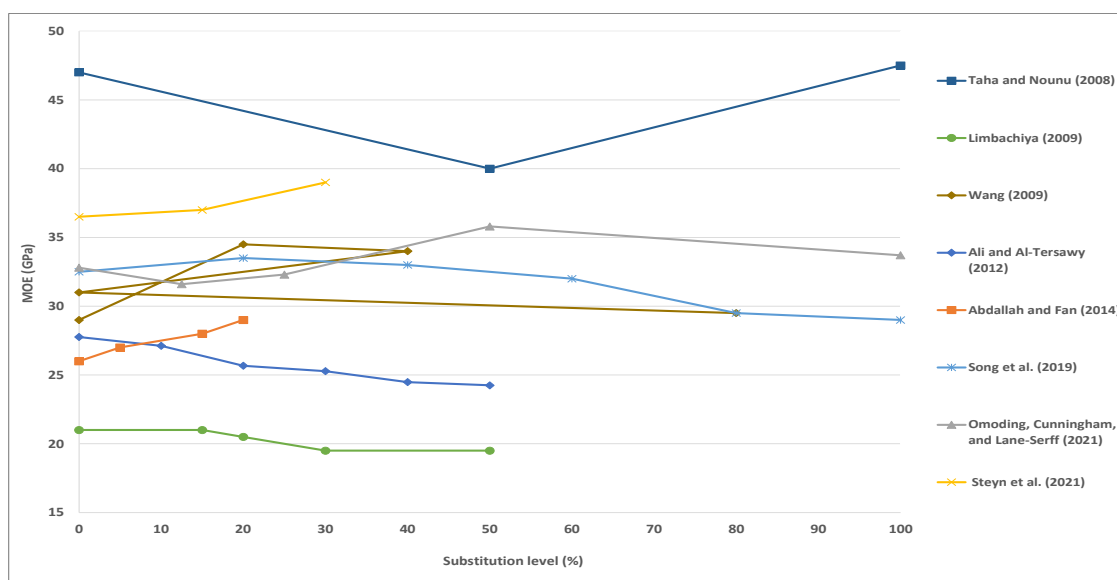


FIGURE 5. Modulus of Elasticity of concrete with various content of the waste glass. Adapted from References [38, 40, 44, 54, 56, 60, 70, 74].

CONCLUSIONS

The utilization of waste glass (WG) in concrete impacts the fresh and mechanical properties of waste glass concrete which must be taken into consideration before being used in structures. The overall conclusions of this review are:

1. Generally, the workability of waste glass-containing concrete mixtures for fine or coarse aggregates was less than for natural aggregate-containing mixtures. Nevertheless, despite the poorer workability, some studies found that the mixtures were still workable.
2. Most studies indicated that with the introduction of WG, the density of concrete decreased due to the decreased density and specific gravity of waste glass aggregates
3. The findings of the literature have been somewhat indecisive regarding the properties of concrete, like compressive strength, splitting tensile strength, flexural strength, and modulus of elasticity. Overall, the findings revealed that the compressive strength, splitting tensile strength, and flexural strength of concrete deteriorated with the integration of waste glass. Nevertheless, the findings concerning the elastic modulus

of concrete were conflicting. This decrease was essential because of the sharp edges and smooth surface of the waste glass that caused the poorer bond between cement mortar and waste glass particles at the ITZ.

4. Studies also indicated that the optimal aggregate substitution level was about 20%. In addition, the glass color does not have a substantial influence on the strength. Although the results are indecisive, WG has the possibility to be an acceptable substitute for fine or coarse concrete aggregates in concrete. Also, adding waste glass to the concrete mixture may improve certain mechanical characteristics of concrete, reduce concrete dead load, and provide an ecological substitute for normal aggregates.

RECOMMENDATIONS

This paper makes the following broad recommendations for future investigations:

1. More investigation is required into the mechanical characteristics of high-performance and high-strength waste glass concrete.
2. The impacts of different glass kinds and colors on concrete mixes should be thoroughly investigated in the future.
3. Test fewer common types of glass as aggregates in concrete because the vast majority of research only covers soda-lime glass.
4. Conducting a comprehensive evaluation of its real environmental effect through life-cycle assessment to evaluate the feasibility of using this waste.

REFERENCES

1. J.-X. Lu, B.-J. Zhan, Z.-H. Duan and C. S. Poon, *Mater. Des.* **135**, 102-111 (2017).
2. ICG, (The International Commission on Glass (ICG), 2020).
3. EPA, (Environmental Protection Agency (EPA), 2021).
4. Eurostat, (2020).
5. N. L. Rahim, R. Che Amat, N. M. Ibrahim, S. Salehuddin, S. A. Mohammed and M. Abdul Rahim, *Mater. Sci. Forum* **803**, 16-20 (2015).
6. İ. B. Topçu and M. Canbaz, *Cem. Concr. Res.* **34**, 267-274 (2004).
7. K. Zheng., *Eco-Efficient Concrete*, edited by F. Pacheco-Torgal, S. Jalali, J. Labrincha and V. M. John (Woodhead Publishing, 2013), pp. 241-270 (2013).
8. B. A. Tayeh, D. M. Al Saffar, A. S. Aadi and I. Almeshal, *J. King Saud Univ. Eng. Sci.* **32**, 495-500 (2020).
9. A. M. Rashad, *Constr. Build. Mater.* **72**, 340-357 (2014).
10. A. I. Jubeh, D. M. Al Saffar and B. A. Tayeh, *Arabian J. Geosci.* **12**, 39 (2019).
11. T.-C. Ling, C.-S. Poon and H.-W. Wong, *Resources, Resour. Conserv. Recycl.* **70**, 25-31 (2013).
12. B. Meyer, 2011.
13. C. Shi, *J. Mater. Civ. Eng.* **21**, 529-534 (2009).
14. K. Afshinnia and P. R. Rangaraju, *Constr. Build. Mater.* **81**, 257-267 (2015).
15. Y. Jiang, T.-C. Ling, K. H. Mo and C. Shi, *J. Environ. Manage.* **242**, 440-449 (2019).
16. A. Schmidt and W. Saia, *ACI Mater J* **60**, 1235-1236 (1963).
17. S. Kozlova, K. Millrath, C. Meyer and S. Shimanovich, *Cem. Concr. Compos.* **26**, 827-835 (2004).
18. R. Oliveira, J. de Brito and R. Veiga, *Constr. Build. Mater.* **44**, 329-341 (2013).
19. G. Trust, (2021).
20. T. D. Dyer and R. K. Dhir, *JJ. Mater. Civ. Eng.* **13**, 412-417 (2001).
21. A. Shayan and A. Xu, *Cem. Concr. Res.* **34**, 81-89 (2004).
22. A. Karamberi and A. Moutsatsou, *Cem. Concr. Res.* **27**, 319-327 (2005).
23. K. Sobolev, P. Türker, S. Soboleva and G. Iscioglu, *Waste Manage.* **27**, 971-976 (2007).

24. E. B. Shand, *Glass engineering handbook*. (1958).
25. A. Mohajerani, J. Vajna, T. H. H. Cheung, H. Kurmus, A. Arulrajah and S. Horpibulsuk, *Constr. Build. Mater.* **156**, 443-467 (2017).
26. S.-B. Park and B.-C. Lee, *Cem. Concr. Res.* **34**, 1145-1152 (2004).
27. C. S. Lam, C. S. Poon and D. Chan, *Cem. Concr. Compos.* **29**, 616-625 (2007).
28. G. Lee, C. S. Poon, Y. L. Wong and T. C. Ling, *Constr. Build. Mater.* **38**, 638-643 (2013).
29. S. de Castro and J. de Brito, *J. Cleaner Prod.* **41**, 7-14 (2013).
30. J. d. B. Diogo Serpa and P. Jorge, *ACI Mater. J.* **112**, (2015).
31. M. M. Disfani, A. Arulrajah, M. W. Bo and R. Hankour, *Waste Manage.* **31**, 2341-2351 (2011).
32. P. S. K. Ooi, M. M. W. Li, M. L. Q. Sagario and Y. Song, *Transp. Res. Rec.* **2059**, 52-62 (2008).
33. M. M. Y. Ali and A. Arulrajah, in *GeoCongress 2012* 3662-3671 (2012).
34. M. J. Terro, *Build. Environ.* **41**, 633-639 (2006).
35. T.-C. Ling and C.-S. Poon, *J. Cleaner Prod.* **29-30**, 46-52 (2012).
36. T.-C. Ling, C.-S. Poon and S.-C. Kou, *Cem. Concr. Compos.* **33**, 848-854 (2011).
37. T.-C. Ling and C.-S. Poon, *Mater. Struct.* **46**, 25-34 (2013).
38. E. E. Ali and S. H. Al-Tersawy, *Constr. Build. Mater.* **35**, 785-791 (2012).
39. T. Liu, H. Wei, D. Zou, A. Zhou and H. Jian, *J. Cleaner Prod.* **249**, 119333 (2020).
40. B. Taha and G. Nounu, *Constr. Build. Mater.* **22** (5), 713-720 (2008).
41. K. H. Tan and H. Du, *Cem. Concr. Compos.* **35** (1), 109-117 (2013).
42. S. A. Yildizel, B. A. Tayeh and G. Calis, *J. Mater. Res. Technol.* **9** (2), 2093-2106 (2020).
43. D. M. Al Saffar, T. A. Tawfik and B. A. Tayeh, *Eur. J. Environ. Civ. Eng.* 1-12 (2020).
44. H.-Y. Wang, *Waste Manage.* **29** (1), 335-341 (2009).
45. N. Arabi, H. Meftah, H. Amara, O. Kebaïli and L. Berredjem, *Constr. Build. Mater.* **209**, 364-376 (2019).
46. H.-Y. Wang and W.-L. Huang, *Constr. Build. Mater.* **24**, 1008-1013 (2010).
47. S.-H. Chen, C.-S. Chang, H.-Y. Wang and W.-L. Huang, *Constr. Build. Mater.* **25**, 3886-3892 (2011).
48. X. Yu, Z. Tao, T.-Y. Song and Z. Pan, *Constr. Build. Mater.* **114**, 737-746 (2016).
49. H. G. Patel and S. P. Dalal, *Procedia Eng.* **173**, 1666-1671 (2017).
50. K. Bisht and P. V. Ramana, *Constr. Build. Mater.* **177**, 116-124 (2018).
51. I. S. Kim, S. Y. Choi and E. I. Yang, *Constr. Build. Mater.* **184**, 269-277 (2018).
52. K. Rashid, R. Hameed, H. A. Ahmad, A. Razzaq, M. Ahmad and A. Mahmood, *Waste Manage.* **79**, 312-323 (2018).
53. Y. Jiao, Y. Zhang, M. Guo, L. Zhang, H. Ning and S. Liu, *J. Cleaner Prod.* **277**, 123501 (2020).
54. Z. C. Steyn, A. J. Babafemi, H. Fataar and R. Combrinck, *Constr. Build. Mater.* **269**, 121242 (2021).
55. A. Gholampour, T. Ozbakkaloglu, O. Gencel and T. D. Ngo, *Constr. Build. Mater.* **270**, 121465 (2021).
56. S. Abdallah and M. Fan, *International Journal of Engineering and Technical Research (IJETR)* **2**, 11-17 (2014).
57. M. Batayneh, I. Marie and I. Asi, *Waste Management* **27**, 1870-1876 (2007).
58. C. H. Chen, R. Huang, J. K. Wu and C. C. Yang, *Cem. Concr. Res.* **36**, 449-456 (2006).
59. Z. Z. Ismail and E. A. Al-Hashmi, *Waste Management* **29**, 655-659 (2009).
60. M. C. Limbachiya, *Constr. Build. Mater.* **23**, 1078-1083 (2009).
61. S. B. Park, B. C. Lee and J. H. Kim, *Cem. Concr. Res.* **34**, 2181-2189 (2004).
62. H.-Y. Wang, H.-h. Zeng and J.-Y. Wu, *Constr. Build. Mater.* **50**, 664-670 (2014).
63. M. N. N. Khan and P. K. Sarker, *Constr. Build. Mater.* **263**, 120177 (2020).
64. M. Naeini, A. Mohammadinia, A. Arulrajah and S. Horpibulsuk, *Sustainability* **13**, 2463 (2021).

65. B. Taha and G. Nounu, [Journal of Materials in Civil Engineering](#) **21**, 709-721 (2009).
66. B. A. Tayeh, [Journal of Civil Engineering and Construction](#) **7**, 63-71 (2018).
67. T. M. Borhan, [Materials & Design](#) **42**, 265-271 (2012).
68. J.-X. Lu, Y. Zhou, P. He, S. Wang, P. Shen and C. S. Poon, [J. Cleaner Prod.](#) **236**, 117635 (2019).
69. F. P. Cota, C. C. D. Melo, T. H. Panzera, A. G. Araújo, P. H. R. Borges and F. Scarpa, [Sustainable Cities and Society](#) **16**, 49-56 (2015).
70. W. Song, D. Zou, T. Liu, J. Teng and L. Li, [Constr. Build. Mater.](#) **202**, 332-340 (2019).
71. T.-C. Ling and C.-S. Poon, [Materials & Design](#) **32**, 2675-2684 (2011).
72. M. H. Ali, Y. Z. Dinkha and J. H. Haido, [Engineering Science and Technology, an International Journal](#) **20**, 536-541 (2017).
73. C. Polley, S. M. Cramer and R. V. d. I. Cruz, [J. Mater. Civ. Eng.](#) **10**, 210-219 (1998).
74. N. Omoding, L. S. Cunningham and G. F. Lane-Serff, [Constr. Build. Mater.](#) **268**, 121177 (2021).
75. M. Batayneh, I. Marie and I. Asi, [Waste Manage.](#) **27**, 1870-1876 (2007).
76. Y. Shao, T. Lefort, S. Moras and D. Rodriguez, [Cem. Concr. Res.](#) **30** (1), 91-100 (2000).
77. N. Degirmencia, A. Yilmazb and O. A. Cakirc, [Indian J. Eng. Mater. Sci.](#) **18**, 303-308 (2011).
78. P. Walczak, J. Małolepszy, M. Reben, P. Szymański and K. Rzepa, [Procedia Eng.](#) **122**, 302-309 (2015).
79. J.-X. Lu, X. Yan, P. He and C. S. Poon, [J. Cleaner Prod.](#) **234**, 1102-1112 (2019).
80. P. Shen, H. Zheng, S. Liu, J.-X. Lu and C. S. Poon, [Cem. Concr. Res.](#) **114**, 103790 (2020).
81. B. Dębska, L. Lichołai and G. J. B. Silva, [Constr. Build. Mater.](#) **258**, 119632 (2020).
82. S. Yang, T.-C. Ling, H. Cui and C. S. Poon, [Constr. Build. Mater.](#) **209**, 522-531 (2019).
83. O. M. Olofinnade, A. N. Ede, J. M. Ndambuki, B. U. Ngene, I. I. Akinwumi and O. Ofuyatan, [Cogent Engineering](#) **5**, 1483860 (2018).
84. M. I. Malik, M. Bashir, S. Ahmad, T. Tariq and U. Chowdhary, [IOSR Journal of Engineering](#) **3**, 8-13 (2013).
85. S. Chandra Paul, B. Šavija and A. J. Babafemi, [J. Cleaner Prod.](#) **198**, 891-906 (2018).
86. H. Haido James, A. Zainalabdeen Marwa and A. Tayeh Bassam, [Adv. Concr. Constr.](#) **11**, 239-253 (2021).