

Sampling of Biopsy

MLT Department
First Stage



Why is a biopsy taken?

- Biopsies are most often done to either confirm or rule out a suspicion of **cancer**.
- Inflammatory disorders, such as in the kidney (nephritis) or the liver (hepatitis).
- Infections, such as tuberculosis.
- Immune disorders, such as chronic pancreatitis.
- A biopsy is also done to see if you're a match for an **organ transplant**. If you've received an organ transplant, a biopsy is done to make sure your body isn't rejecting it.
- Sometimes a biopsy is done to **determine your treatment plan**. For example, a biopsy may help your healthcare provider decide if surgery is the best treatment or if a different treatment may be considered instead.

Who will perform my biopsy?

Biopsies are routinely done by **surgeons, dermatologists and radiologists**. Ask your healthcare provider who will perform the biopsy and who will interpret the results. This will vary by type of biopsy.

Biopsies are done in many different ways depending on where the cell or tissue sample is taken:

Skin biopsies;

- **Shave biopsy:** This biopsy uses a razor to scrape away a small sample of cells on the surface of your skin. This method is often used to collect part of a skin growth, sore or mole.
- **Punch biopsy:** This biopsy uses a special device to punch a hole in the skin to remove all or most of a lesion deep in the skin. You may need stitches.
- **Excisional or incisional biopsies:** These skin biopsies remove all (excisional) or part of a lesion (incisional) to test or treat it. A scalpel is used to perform the biopsy. You will need stitches.

General types of biopsy;

- **Needle biopsy:** The needle used to gather tissue is inserted through your skin and is sometimes guided by a CT scan or ultrasound. A fine-needle aspiration (also called a **fine-needle biopsy**) is attached to a syringe. This method is used to remove a small sample of tissue from a tumor or fluid. A **core needle biopsy** is used to remove larger tissue samples. This method is commonly used to check breast biopsies.
- **Endoscopic or laparoscopic biopsy:** These biopsies use an endoscope or laparoscope to see inside your body. With both of these methods, a small cut is made in your skin and an instrument is inserted. An endoscope is a thin, flexible tube with a camera on the tip, along with a cutting tool to remove your sample. A laparoscope is a slightly different scope.

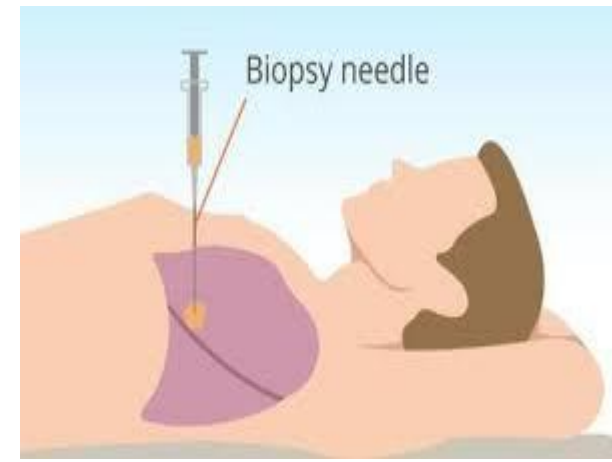
- **Excisional or incisional biopsy:** For these open biopsies, a surgeon cuts into your body and the entire tumor is removed (excisional biopsy) or a part of the tumor is removed (incisional biopsy) to test or treat it.
- **Perioperative biopsy:** This biopsy is done while you're having another procedure. Your tissue will be removed and tested right away. Results will come in soon after the procedure so if you need treatment, it can start immediately.
- **Bone marrow biopsy:** This biopsy is performed to get a closer look at your **blood** and rule out specific bone marrow **disorders or cancers**.



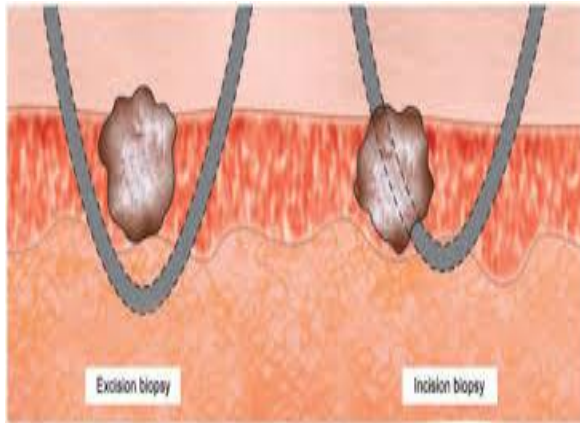
Shave biopsy



Punch biopsy



Needle biopsy



Excisional or incisional biopsies



Bone marrow biopsy



Endoscopic biopsy

Preparation for biopsy;

Depending on the biopsy type, your healthcare provider might make certain suggestions. **Your provider might suggest that you:**

- Temporarily stop taking certain medications, such as aspirin or blood thinners.
- Don't eat or drink before the procedure.
- Any allergies you have.
- Any current illnesses/medical conditions.
- If there's any chance you're pregnant.

Anesthesia and biopsy sampling;

- ❖ Depending on the type of biopsy, your biopsy may be performed in your provider's office or an operating room. If your biopsy is painless and simple (like a cell scraping), you won't need a numbing agent.
- ❖ If your biopsy is more involved, your provider or surgeon will give you pain relief medications, including a local anesthetic where the biopsy is removed from, a regional anesthetic to numb a larger **local area or general anesthesia** (to put you to sleep).

After the anesthetic has taken effect, your biopsy will be performed. Your cell or tissue sample will then be sent to a laboratory to be viewed under a microscope.

What are the risks or complications of having a biopsy?

Risks include:

- Bleeding.
- Infection.
- Scarring.



If local anesthesia is used, you'll go home after the procedure. If general anesthesia is used, you may have to stay overnight.



RESULTS AND FOLLOW-UP;

- Your healthcare provider may call you with the results.
- May want to discuss your results in a follow-up office visit.
- Your results may be posted in your electronic medical record.
- Results are generally available within a few days to one week to 10 days.

Your recovery time depends on;

- The type of biopsy you had.
- The size of the biopsy.
- The location of the biopsy.
- The type of anesthesia.



THANK YOU