

## Module (Course Syllabus) Catalogue

### 2022-2023

College/ Institute	Shaqlawa Technical College	
Department	Architectural Technique Dept.	
Module Name	Graphic design	
Module Code	GRD403	
Semester	4 <sup>th</sup>	
Credits	6	
Module type	Prerequisite <input type="checkbox"/>	Core * <input type="checkbox"/> Assist. <input type="checkbox"/>
Weekly hours	8	
Weekly hours (Theory)	( )hr Class	( )hr Workload
Weekly hours (Practical)	( 4 )hr Class	( 4 )hr Workload
Lecturer (Theory)		
E-Mail & Mobile NO.	07504620709	
Lecturer (Practical)	Dldar Qasim Hasan	
E-Mail & Mobile NO.	dildar.qasim@epu.edu.iq	

# Course Book

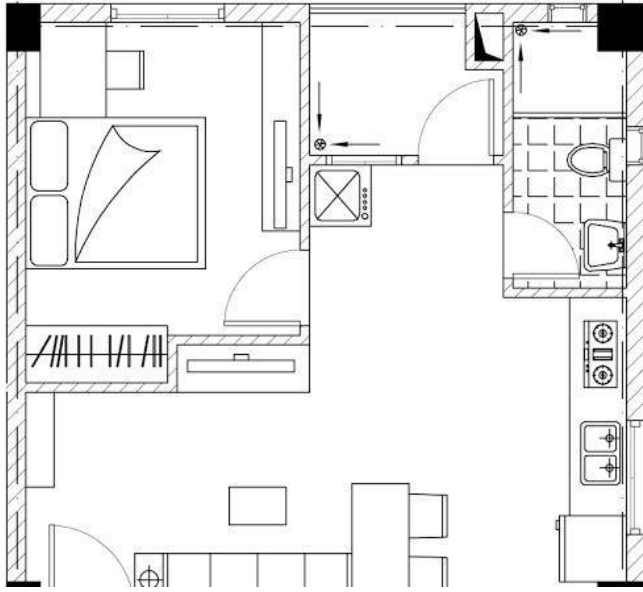
<p><b>Course Description</b></p>	<p>Graphic Design is a course that explores graphic communication through the understanding of the elements and principles of design; as well as, the design process, from idea development through the final execution of a document.</p>
<p><b>Course objectives</b></p>	<p>By studying Graphic Design students will have a wider horizon in the field of art and will Demonstrate artistic growth by executing a variety of images/ text as images, traditional and contemporary techniques that solve complex design problems using creative thinking and analytical skills. Develop and demonstrate their understanding and skillful use of the elements and principles of visual design (1. conceptual element, 2. visual element, 3. relational element &amp; 4. practical or functional element.) Gain skill to use the digital tools as a powerful means of communication for creation, modification &amp; presentation. Study the works of contemporary artists, designers as well as the masters in the field and discuss and enrich their vocabulary of design. Learn ways to apply aesthetic sensibilities into their works and explore ways to balance between formal theories with practical applications.</p>
<p><b>Student's obligation</b></p>	<p>In this class, students will design and create a variety of projects, both by hand and by using computer graphic design programs. They will maintain good studio organization and use of tools as expected by the teacher. They are expected to maintain facilities in an appropriate working condition</p>
<p><b>Required Learning Materials</b></p>	<p>Data Show, Handout, lecture notes and white board notes.</p>
<p><b>Assessment scheme</b></p>	<p>16% Mid Term (Theory and practical) 4% Quiz 40% Assignment (report, paper, homework, seminar.) 40% final practical 0% final theory</p>
<p><b>Specific learning outcome:</b></p>	<p>This course introduces students to graphic design as a form of visual knowledge production, documentation, and communication. Historical and contemporary cultural literacy is emphasized. Digital print and screen-based projects familiarize students with the process of problem discovery, creation, setting, and solving. Presentations, critiques, reading assignments, and class discussions allow the student to develop a vocabulary and a critical framework for speaking about design skills, techniques, and practices.</p>
<p><b>Course References:</b></p>	<p>Beginning photoshop Prof. Brad Shirakawa  Photoshop® in Architectural Graphics</p>

<b>Course topics (Practical)</b>	<b>Week</b>	<b>Learning Outcome</b>
1-An Introduction to photoshop	1	
2-Photoshop basics	2	
3- Image adjustments	3	
4-Selection tools and methods	4	
5-Adjusting imperfections in photoshop	5	
6-Working with layers	6	
7-Filters	7	
8-Working with shapes	8	
9-Architectural plan post production in photoshop	9	
10-Architectural plan post production in photoshop	10	
11-Architectural plan post production in photoshop	11	
12-Architectural plan post production in photoshop	12	
13-Architectural plan post production in photoshop-Facade	13	
14-Architectural plan post production in photoshop-Facade	14	

**Questions Example Design**

Practical Example

Q1/ draw the plan then make furniture and colorize in photoshop program.



Q2/ Use adjustment layer on the following image to adjust the color and brightness of the image.



Q3/ What happens when you add a Black & White Adjustment Layer to a color image?

Choose one

- The Image Mode is changed to Grayscale and all color information is lost.
- The layers under the adjustment layer look like a grayscale image but the image mode is not changed and all color information is preserved.
- The Image Mode is changed to Duotone but color can be recovered by turning off the visibility of the Adjustment layer
- The Image Mode is changed to Index Color and all color information is preserved

Q4/ You are working on an image and want to copy a tree to another location in the image. Which tool will allow you

to

paint a copy of the tree?

Choose one

- Healing Brush
- Spot Healing Brush
- Clone Stamp Tool
- Patch Tool

Q5/ To delete a layer from your image, turn off the "eye" icon showing the layer.

- True
- False

Q6/ The \_\_\_\_\_ tool allows you to select a rectangular or circular area of an layer to change or delete.

- marquee
- crop
- hand
- zoom

Q7/ To resize a graphic in a layer, select the \_\_\_\_\_ tool, then check mark \_\_\_\_\_ to see

selection handles.

- marquee; resize
- move; show bounding box
- move; resize
- marquee; show bounding box

Q8/ Once you build the layers in your graphic design, you cannot rearrange them.

- True
- False

Q9/ When using the SAVE AS: feature, the \_\_\_\_\_ file type saves my graphic design with all layers visible

changes upon opening the next time. Choose all that apply. You must select all correct possibilities.

- .pdf
- .gif
- .psd

**Extra notes:****External Evaluator**

This course book has to be reviewed and signed by ( ). He approves that GIS modules corresponds to general policy of EPU and their standards.